

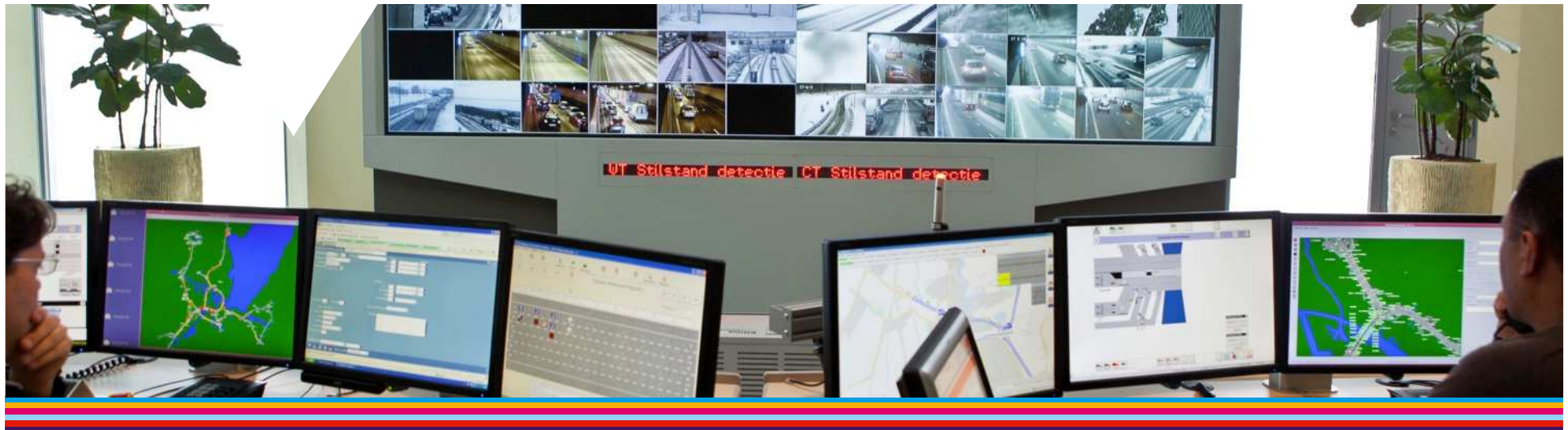


MEERDERE WERELDEN KOMEN SAMEN





MEERDERE WERELDEN KOMEN SAMEN



TECHNISCHE EN SOCIALE INNOVATIES VERSTERKEN ELKAAR



30 years
Government

Road side

10 years
Car industry

Vehicle

5 years
Industry

Service providers

30 years
Government

Traffic Control Center



On board unit
Industry/ 'automotive aftermarket'

2 years

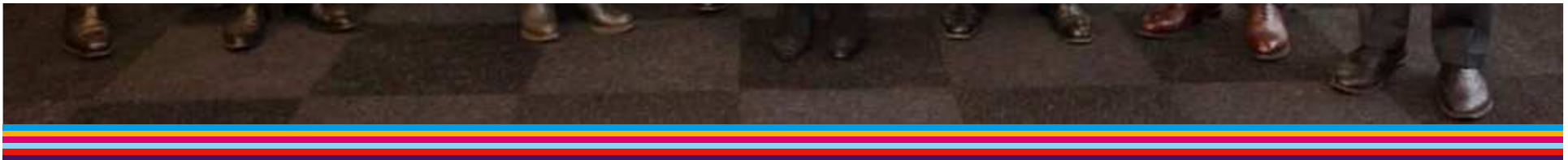
App on smart phone
Consumer Industry

2 hours

Source: TNO

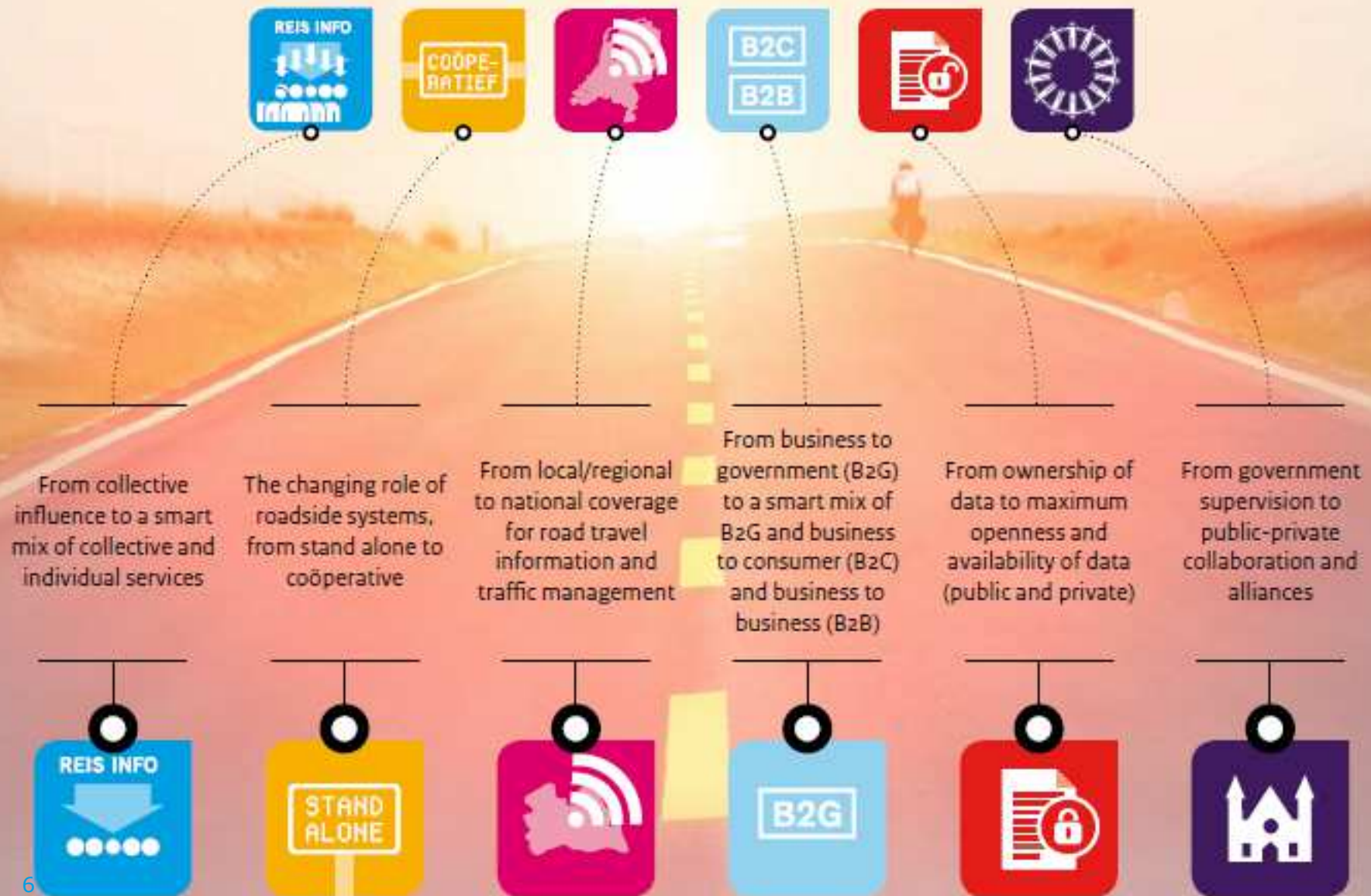


Publiek-private strategie:
Routekaart 'Beter geïnformeerd op weg'



ROADMAP

FOCUS ON SIX TRANSITION ROUTES



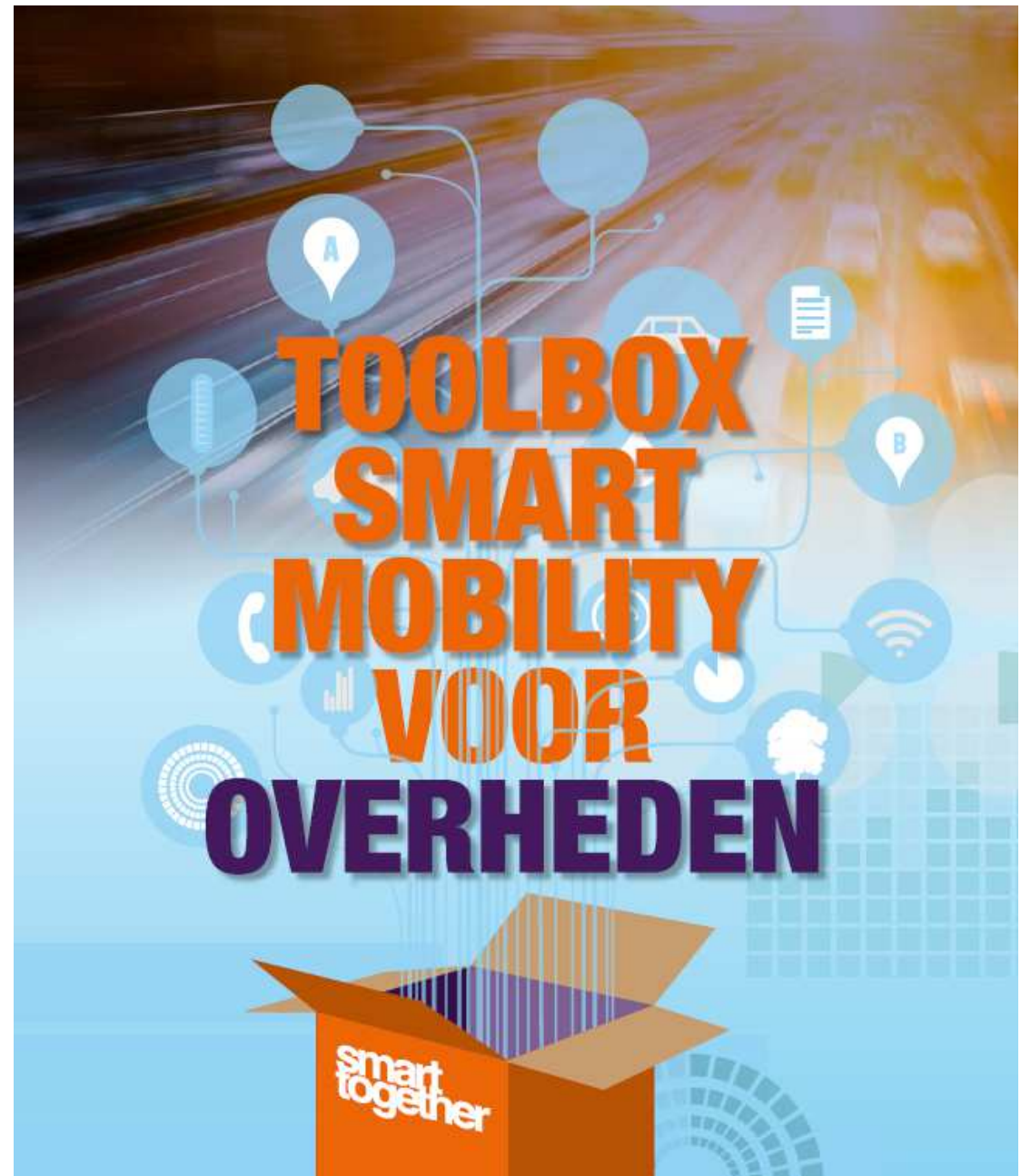


Connecting Mobility



Toolbox

- Social design
- Business agility
- Precompetatieve PPS
- Serious Gaming





Home > ITS overview NL > How does the ITS overview work?

[Go to the dashboard](#)

The ITS summary covers insight into and an overview of projects, services and facilities in the area of Intelligent Transport Systems in the Netherlands; business Intelligence by and for professionals. Click in the list below for information about the specific items, or use the dashboard to filter and gain more insight into the status of the current ITS field. [More information](#)



PROJECTS



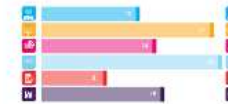
SERVICES



FACILITIES

Dashboard

A quick review of the status of the current ITS field?



[Use the dashboard!](#)

Projects

Initiative

The Digital Road Authority -
Air quality Jan van
Galenstraat

Current

Alcohol lock
Accessibility Scheveningen
Brabant In-car III
CHARM PCP (Cooperative)
Compass4D
Cooperative ITS Corridor
The Digital Road Authority -
Incident Management
The Digital Road Authority -

Services

Initiative

GNV on the basis of an
integration of roadside loop
data and Floating Car Data
(PPA)

GNV on the basis of
roadside loop data (PPA)
Private Traffic Management
in Amsterdam South-East
around major events (PPA)

Under development

Smart Routing service
(Sensor City)
IJburg Streetwise App
(Digital Road Operator)

Facilities

Initiative / concept

SpitsLive

Permanently operational

Traffic Innovation Centre
NDW - National Data
Warehouse for Traffic
Information

Missing info

The following facilities do not yet
contain enough information to be
displayed. Is one of these facility
yours? Click to supply more
information!

A270 test facility
Cooperative Mobility
Architecture

Add your project

Your project, service or facility in
the ITS list? Fill in our online
questionnaire now!

[→ register project](#)
[→ register service](#)
[→ register facility](#)

Contact

Additions, changes to or questions
about this summary?



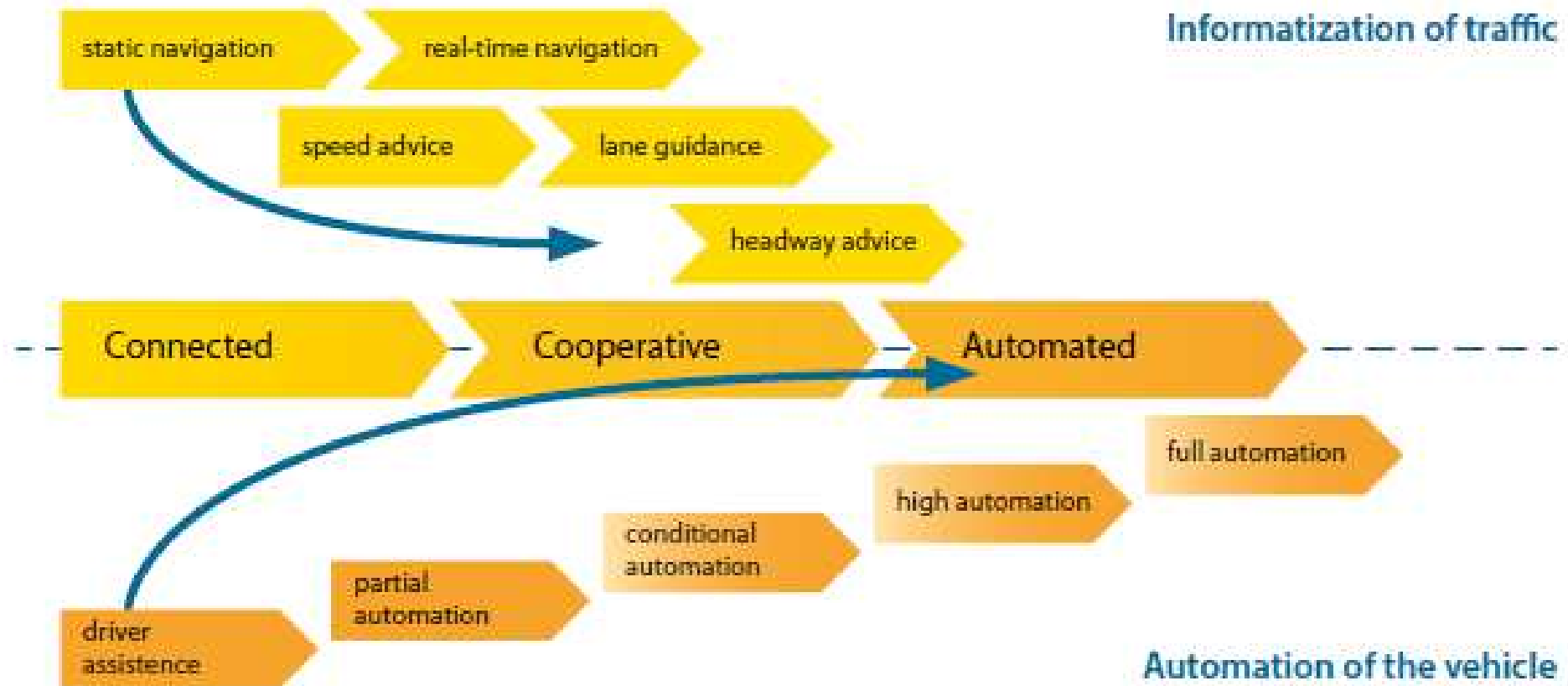
Send an email to
[Connecting Mobility](#)

Or go to a specific project, service
or facility and use the contact form.

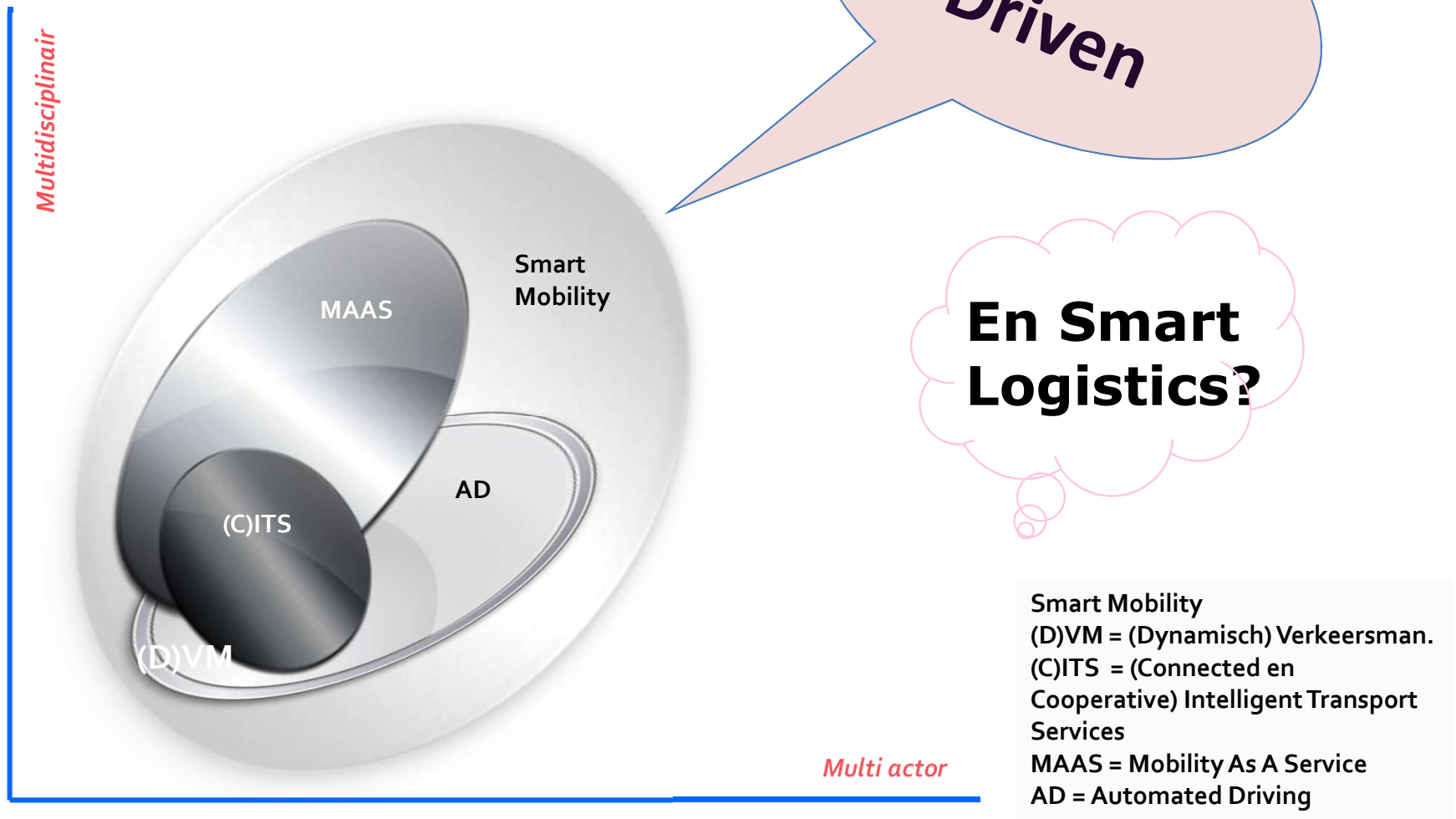
Dutch European Presidency



Automated, cooperative and connected driving



Smart Mobility: scope





KANS: NEDERLAND LIVING LAB VOOR SMART MOBILITY

